

3. Running state setting

3.1 Home Screen



[Figure 3-1] Home Screen

No	Content	Describe
①	Monitor screen	Switch to run screen .
②	Curve display	Switch to curve representation and curve storage, USB storage devices, and export curves.
③	Operation setting	Switch to function and running mode settings screen.
④	Program settings	Switch to program settings main screen.
⑤	Reserve set	Switch to set the current time and the appointment time of the screen .
⑥	Screen setting	Using the prompt tone, the display settings screen.

3.2 Fix Run

3.2.1 Fix Run first stop screen

- ▶ [3.1 Home Screen] Select Monitor Screen, Can be switched to " Fix Run first run screen".
- ▶ [4. Operation setting]Select run mode as " FIX".



[Figure 3-2] Fix Run first stop screen

- ▶ After inputting the temperature and humidity setting value, select the right lower end of the Run key, can perform the fixed value operation.

3.2.2 Fix Run first run screen

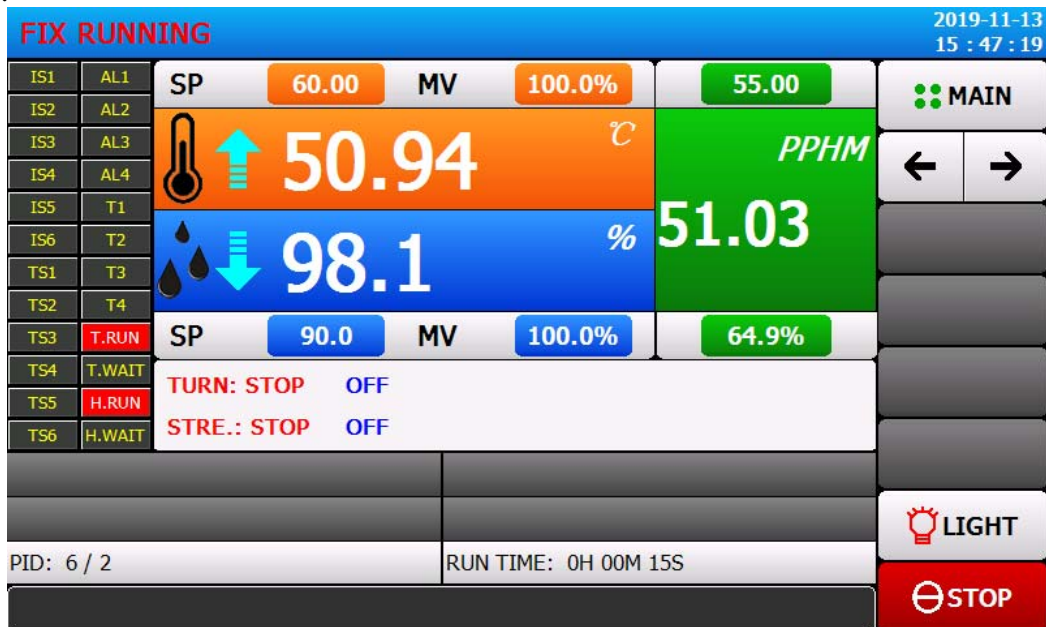


[图 3-5] Fix Run first run screen

- ① Current temperature setting value.
 - ② Current temperature.
 - ③ Current humidity.
 - ④ Current humidity setting value.
 - ⑤ Current date / time, click on the LCD screen can be turned off.
 - ⑥ From the current screen to switch to the next screen.
 - ⑦ With the current set temperature value, Executable (ON TUNING) or (OFF TUNING) manual adjustment (TUNING AUTO).
 - ☞ Can be set by the screen settings are used to adjust the key.
 - ⑧ With the current set humidity value, Executable (ON TUNING) or (OFF TUNING) manual adjustment (TUNING AUTO).
 - ☞ Can be set by the screen settings are used to adjust the key.
 - ⑨ Lighting key.
 - ☞ Click (Lighting key) key, set the relay will be a good action. Relay pointing to lighting.
 - ⑩ Key to stop running
 - ☞ If Fix stop ,the key display run.
- ※ In the Fix run screen, ⑨, ⑩ is Inactive state.

3.2.3 Fix Run second run screen

► Command value, set value, control output value, and display screen of status lamp action state.

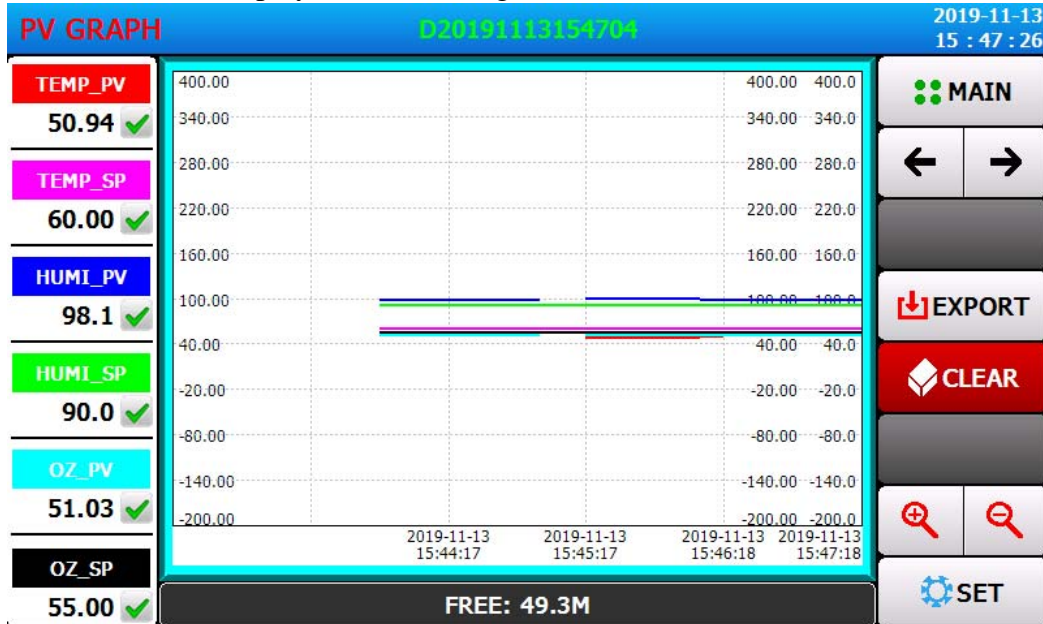


[Figure 3-6] Fix run second run screen

- ① The ON state is represented by red, and the OFF state is represented by a deep grey.
- ② Number of the currently applicable PID ZONE.
- ③ Current temperature control output.
- ④ Current humidity control output.
- ⑤ Time to run the set value.

3.2.4 Fix Run third run screen

- ▶ The left part of the picture shows the set value of temperature and humidity and the control output value.
- ▶ To set whether to display the data through the check box.

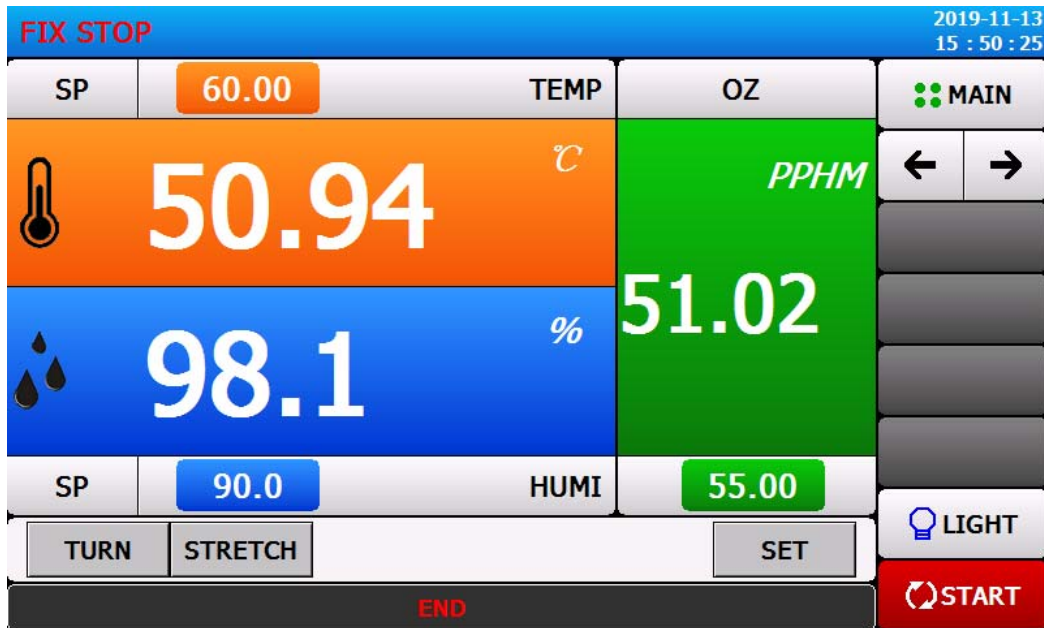


[Figure 3-7] Fix run third run screen

- ① Indicates the current temperature, humidity, the command value, the set value, the control output value.
 - ② Enter the USB storage device screen.
 - ③ Delete current test curve.
 - ④ Movement of time axis.
- ☞ The sampling time is 30 seconds and can be stored for about 56 days.

3.2.5 Fix Run stop screen

- ▶ With [4. Run operation settings] set the time after the end of the run, As shown in the following figure, will display the "end of the fixed value" of the prompt message, while the end of the fixed value.
 - ▶ If you click "stop" to force the end of the operation, the message will not appear on the screen.
 - ▶ When the message is terminated by a prompt operation, the part of the touch screen will disappear.
- ☞ At the end of the program run is the same



[Figure 3-8] Fix Run stop screen

3.3 Program Run

3.3.1 Program Run first stop screen

- ▶ [3.1 Home Screen] select "Monitor Screen", can be switched to "Program Run first run screen".
- ▶ [4. Run operation settings] The running mode is selected as the "program".
- ▶ Program setting method, please refer to [5.1 program settings].
- ▶ [Figure 3-9 Program Run first stop screen] in the stop screen click on the right side at the lower end of the Run button will switch to [Figure 3-10 Program Run first run screen].



[Figure 3-9] Program Run first stop screen

※ The Program Run Notes:

- ▶ If the number of segments is shown as 0, then it does not run.

3.3.2 Program Run first run screen



[Figure 3-10] Program Run first run screen

- ① Temperature set value for the current run.
 - ② Current temperature.
 - ③ Current humidity.
 - ④ The current run of the humidity settings.
 - ⑤ Maintain (ON HOLD) or lift (OFF HOLD) current temperature and humidity setting value.
 - ⑥ Terminates the current ongoing fragment, forcing it to jump to the next segment.
 - ⑦ In the current setting, executable (TUNING ON) (TUNING OFF) or cancel the manual adjustment.
 - ⑧ With the current set of humidity values, can be implemented (ON TUNING) or lift (OFF TUNING) manual adjustment.
 - ⑨ Lighting key.
- ☞ Click (Lighting key) key, set the relay will be a good action. Relay pointing to lighting.
- ⑩ Key to stop running
- ☞ If Program stop ,the key display run.
- ※ In the Program Run screen, ⑤ ~ ⑧ is Inactive state.

3.3.3 Program Run second run screen

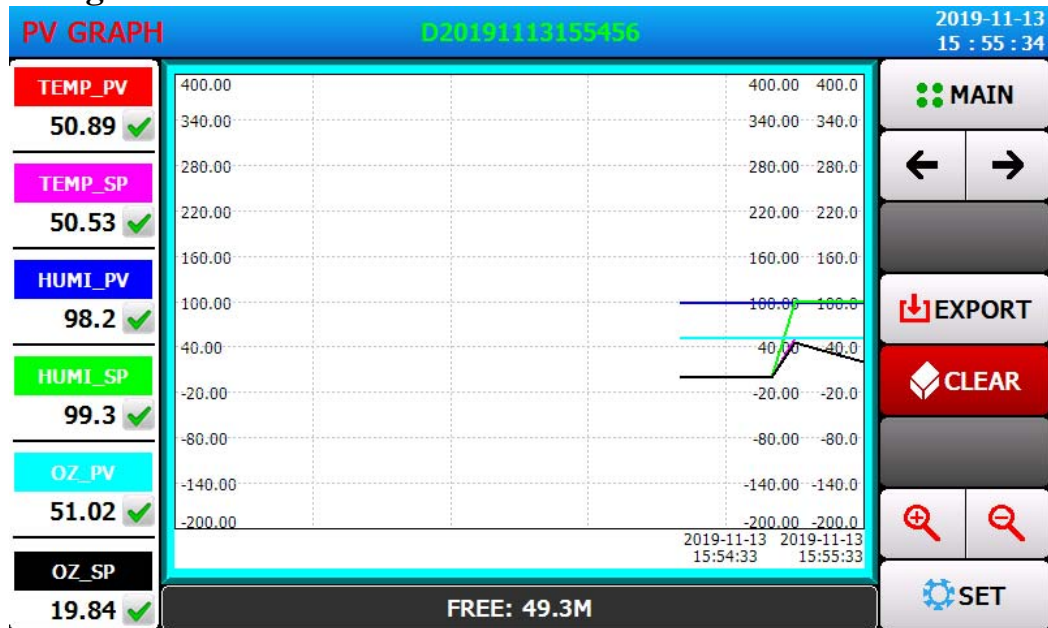
► Represents a picture of a command value, a set value, a control output value, and a status lamp operation state.



[Figure 3-11] Program Run second run screen

- ① ON state in red, OFF state expressed in deep gray.
- ② The current running program number and segment number.
- ③ Program loop.
- ☞ [Group cycle : 000/000] In front of the number indicates the number of cycles that have been executed, followed by a number that indicates the number of loops that are set.
- ④ The currently applicable PID ZONE number.
- ⑤ Partial cyclic state.
- ☞ [Segment number of cycles : 00/00] In front of the number indicates the number of cycles that have been executed, followed by a number that indicates the number of loops that are set.
- ⑥ Time and setup time for the segment that is currently segment.
- ☞ [Segment Time : 000H00M/000H00M] the preceding time represents the time of the segment, followed by the time representation of the [5.1 Program settings].
- ⑦ Program run time.

3.3.4 Program Run third run screen



[Figure 3-7] Program Run third run screen

- ① Indicates the current temperature, humidity, the command value, the set value, the control output value.
 - ② Enter the USB storage device screen.
 - ③ Delete current test curve.
 - ④ Movement of time axis.
- ☞ The sampling time is 30 seconds and can be stored for about 56 days.

3.3.5 Program Run stop screen

- ▶ The termination set interval running all segments stored in the model, such as icon will display "Program end", after the program will end.
 - ▶ Run in the "Stop" button to force the termination of the words, the picture will not have prompted information.
 - ▶ At the end of operation if the termination of the operation information, the part of the touch screen, the information will disappear.
- ☞ Program when the end is the same



[Figure 3-13] Program Run stop screen